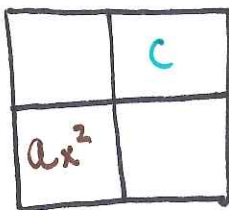


Factoring with Generic Rectangles and Diamond Problems

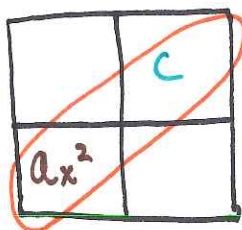
$$ax^2 + bx + c$$

1. Check if there is a common factor other than 1 that goes into a , b , and c . Pull out that number.

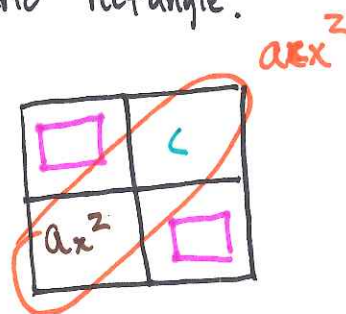
2. Place your constants



3. Find your product



5. Place your solutions to the diamond problem into the generic rectangle and find the dimensions of the generic rectangle.



6. write as product = sum

4. Place your sum and product in your diamond

